



Targeting Tier-1 Copper Discoveries

In Botswana's Kalahari Belt and San Juan, Argentina

ASX



ASX:BRX

July 2026 Investor Presentation

Disclaimer and Competent Person Statement



Disclaimer

Belararox Limited ("The Company") does not purport to give financial or investment advice. No account has been taken of the objectives, financial situation or needs of any recipient of this document. Recipients of this document should carefully consider whether the securities to be issued by the Company are an appropriate investment for them in light of their personal circumstances, including their financial and taxation position. The opinions and recommendations in this presentation are not intended to represent recommendations of particular investments to particular persons. This presentation does not constitute financial product advice.

To the fullest extent permitted by law, the Company and its associates or any of its directors, agents, officers or employees do not make any representations or warranties, express or implied, as to the accuracy or completeness of any information, statements, opinions, estimates, forecasts or other representations contained in this presentation. No responsibility or liability for any errors or omissions from this presentation arising out of negligence or otherwise is accepted.

This document has been prepared as a summary only and does not contain all information about the Company's assets and liabilities, financial position and prospects and the rights and liabilities attaching to the Company's securities. This document should be read in conjunction with any other reports and information provided or released by the Company.

Any securities issued by the Company are considered speculative and, there is no guarantee that they will make a return on the capital invested, that dividends will be paid on the Shares or that there will be an increase in the value of the Shares in the future. All securities transactions involve risks, which include (among others) the risk of adverse or unanticipated market, financial or political developments.

Some of the statements contained in this presentation may be forward-looking statements. Forward-looking statements include but are not limited to, statements concerning estimates of expected costs, statements relating to the advancement of the Company's investments and other statements which are not historical facts. Although the Company believes that its expectations reflected in the forward-looking statements are reasonable, such statements involve risk, and uncertainties and no assurance can be given that actual results will be consistent with these forward-looking statements. Various factors could cause actual results to differ from these forward-looking statements including the potential that the Company's projects may experience technical, geological, metallurgical and mechanical problems, changes in product prices and other risks not anticipated by the Company or disclosed in the Company's published material.

The Company confirms that it is not aware of any new information or data that materially affects the information included in the relevant market announcement and, in the case of mineral resource estimate, that all material assumptions and technical parameters underpinning the estimates in the relevant market announcement continue to apply and have not materially changed.

This presentation and contents have been made available in confidence and may not be reproduced or disclosed to third parties or made public in any way without the express written permission of the Company.

Competent Person Statement

Mr Chris Blaser is General Manager – Exploration of Belararox Ltd and is a Competent Person who is a Member of the Australasian Institute of Mining and Metallurgy (AusIMM) and a Member of the Australian Institute of Geoscientists (AIG). Mr Blaser has sufficient experience that is relevant to the style of mineralisation and type of deposit under consideration, and to the exploration techniques being used to qualify as a Competent Person as defined in the 2012 Edition of the "Australasian Code for Reporting of Exploration Results, Mineral Resources and Ore Reserves". Mr Blaser has consented to the inclusion in this announcement of the matters based on his information, in the form and context in which they appear.

The information in this announcement that relates to exploration results that relates to the TMT project in Argentina is extracted from ASX announcements listed below and compiled by Mr Chris Blaser.

- Significant High Grade Silver Zone Discovered – 18 March 2026
- Secures Strategic Ground Adjacent to Toro South – 13 March 2026
- Exploration Update – MT/IP Surveys Commence at Toro South – 11 November 2025
- Exploration Update – TMT Project – 3 July 2025
- TMT – Copper Mineralisation Confirmed At Tambo South – 4 June 2025
- Assay Results from Malambo Confirm Porphyry Style Target – 16 May 2024
- Assay Results from Toro Tenement Support Epithermal Targets – 29 April 2024
- TMT Project (Tambo South): Geological Mapping Confirms Prospectivity for a High Sulphidation / Porphyry System – 18 Mar 2024
- TMT Operational Update: Geological Mapping Supports the Porphyry Potential at Toro – 22 Jan 2024
- Amended TMT Fieldwork Update - 12 Dec 2023
- TMT EIA Approval – 1 Sept 2023
- TMT Project 2012 JORC Report verifies Zinc Mineralisation – 17 Jul 2023
- TMT Project Environmental Impact Assessments Lodged – 8 Jun 2023
- Amended Announcement - Porphyry Prospectivity Confirmed with additional TMT targets Identified - 23 May 2023
- Porphyry Prospectivity Confirmed with Additional TMT Targets Identified – announced 18 May 2023
- TMT project acquired – announced 23 March 2023

Cautionary Statement: The intercepts from the 1996-1997 Sonoma Resource Development Argentina S.A. Diamond Drilling ("DD") and Reverse Circulation ("RC") drilling campaign are suitable for the reporting of 'Exploration Results' for mineral prospectivity, further exploration work would be needed to produce a 'Mineral Resource'.

The information in this announcement that relates to KCB Project is extracted from ASX announcements listed below and compiled by Mr Chris Blaser.

- Geophysical Interpretation confirms geophysical targets at KCP – 23rd June 2026
- Kalahari Copper Project, Botswana >1,000 Km² Airborne EM Survey Targets Prospective D'kar Formation - 13 April 2026
- Commencing Drilling of Priority Copper Targets – Botswana – 10 July 2025
- Botswana Areas of Interest Identified – 25 March 2025
- Binding Agreement Executed to Acquire Kalahari Copper Project in Botswana - 12 September 2024

The announcements are available to view at www.belararox.com.au and www.asx.com.au. The Company confirms that it is unaware of any new information or data that materially affects the information included in the original market announcements. The Company confirms that the form and context in which the Competent Person's findings are presented have not been materially modified from the original market announcements.

Company Projects Overview

Toro-Malambo-Tambo (TMT) Project

Located in the San Juan Province of Argentina, the project spans over 320 km² and is located in an underexplored gap between two world-class metallogenic belts, the El Indio and Vicuna belts in the Central Andes. These world-class metallogenic belts are rich in precious and base metals, including high-profile advanced copper-gold porphyry projects. Both the Chilean and Argentine sides of the border host large operating mines, which are being actively explored by large international mining companies. These include Josemaria (Lundin Mining Corp.), Filo del Sol (Filo Mining Corp.), Valeriano (ATEX Resources Inc.), and Veladero (Barrick-Shandong).

TMT Project Argentina



Kalahari Copper Belt (KC) Project

Located within the prolific Kalahari Copper Belt in northern Botswana. Comprising fourteen exploration licenses spanning 3,900 km² in the highly prospective geological region renowned for hosting several world-class, sediment-hosted copper-silver deposits. These include Sandfire's Motheo Copper Mine and MMG's Khoemacau Mine.

KC Project Botswana



Kalahari Copper Project: Full Reset, New Program Underway



Kalahari Copper Project (100% BRX)

Kalahari Copper (KC) project in Botswana - a region hosting significant copper-silver resources owned and operated by global players



Complete Reset

Incoming exploration team with a successful track record in the discovery of copper deposits in the Central African Copper Belt (Hills, Catterall etc)



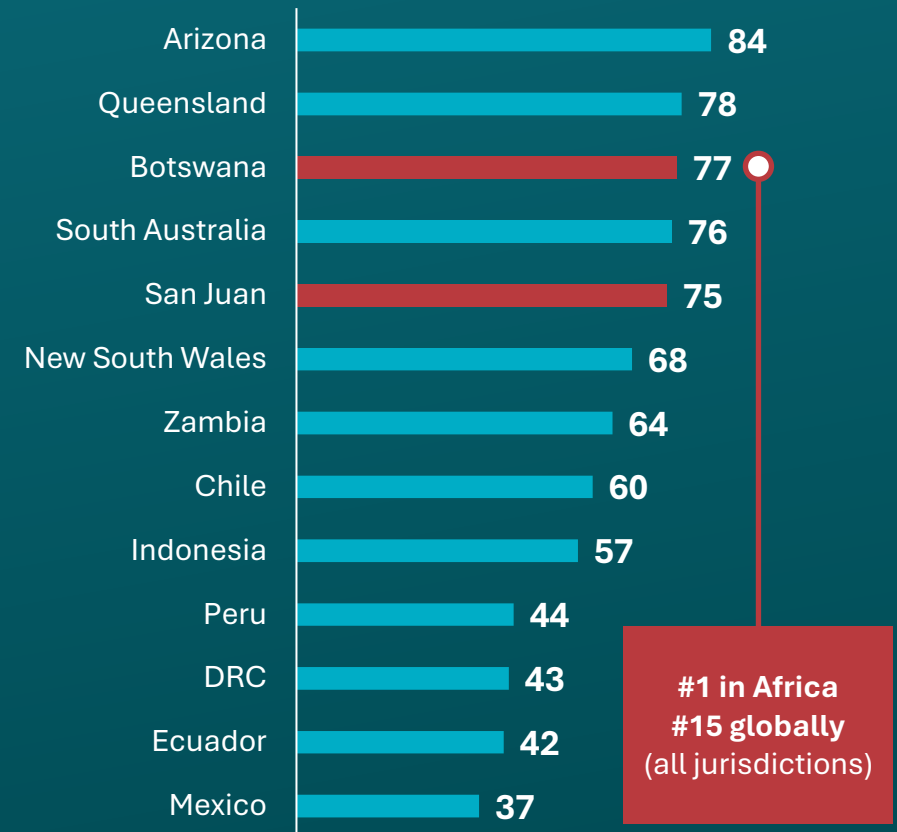
Poised to Deliver Significant Growth

Active exploration program imminent with detailed geophysics and drilling set to commence and run for 3-6 months – big opportunity for sedimentary copper exploration success

Botswana: #1 Ranked Jurisdiction in Africa for Mining Investment

- ✓ **Politically Stable**
longest uninterrupted democracy in Africa
- ✓ **Fiscal Strength**
A3 Moody's rating (highest in Africa)
- ✓ **Fast Growing Economy**
GDP growth of 6.5% (2022)
- ✓ **Attractive Tax Framework**
22% company tax rate / 3-5% royalties
- ✓ **Access to Infrastructure**
72% grid connection (8th highest in Africa)
- ✓ **Prominent Mining Sector**
21.9% of GDP (single biggest contributor)

Fraser Institute, Investment attractiveness index (2023)
Major copper producing jurisdictions



'Survey of Mining Companies, 2023' – Fraser Institute Annual

Immediately Along Strike From World Class Resources

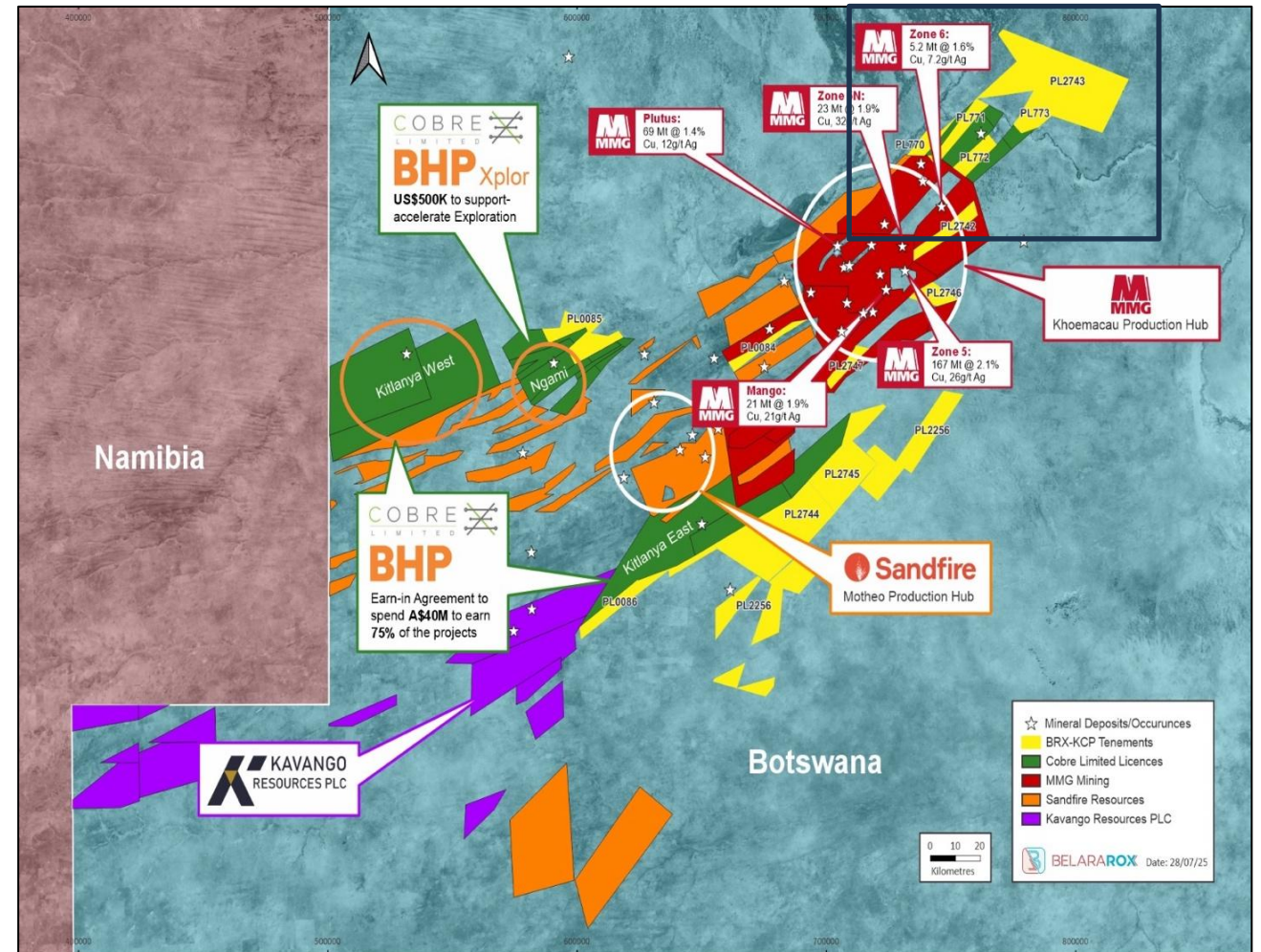
- ✓ Project located in the prolific **Kalahari Copper Belt** in Botswana
- ✓ Tenements covering **~3,900 km²** of land in prospective areas
- ✓ Targeting **sediment-hosted** copper deposits
- ✓ Tenements along strike of known **copper-silver mineralisation**



- AUD 22.1B Market Cap
- Consolidated Mineral Resources
 - 450Mt @ 1.5% Cu and 19g/t Ag

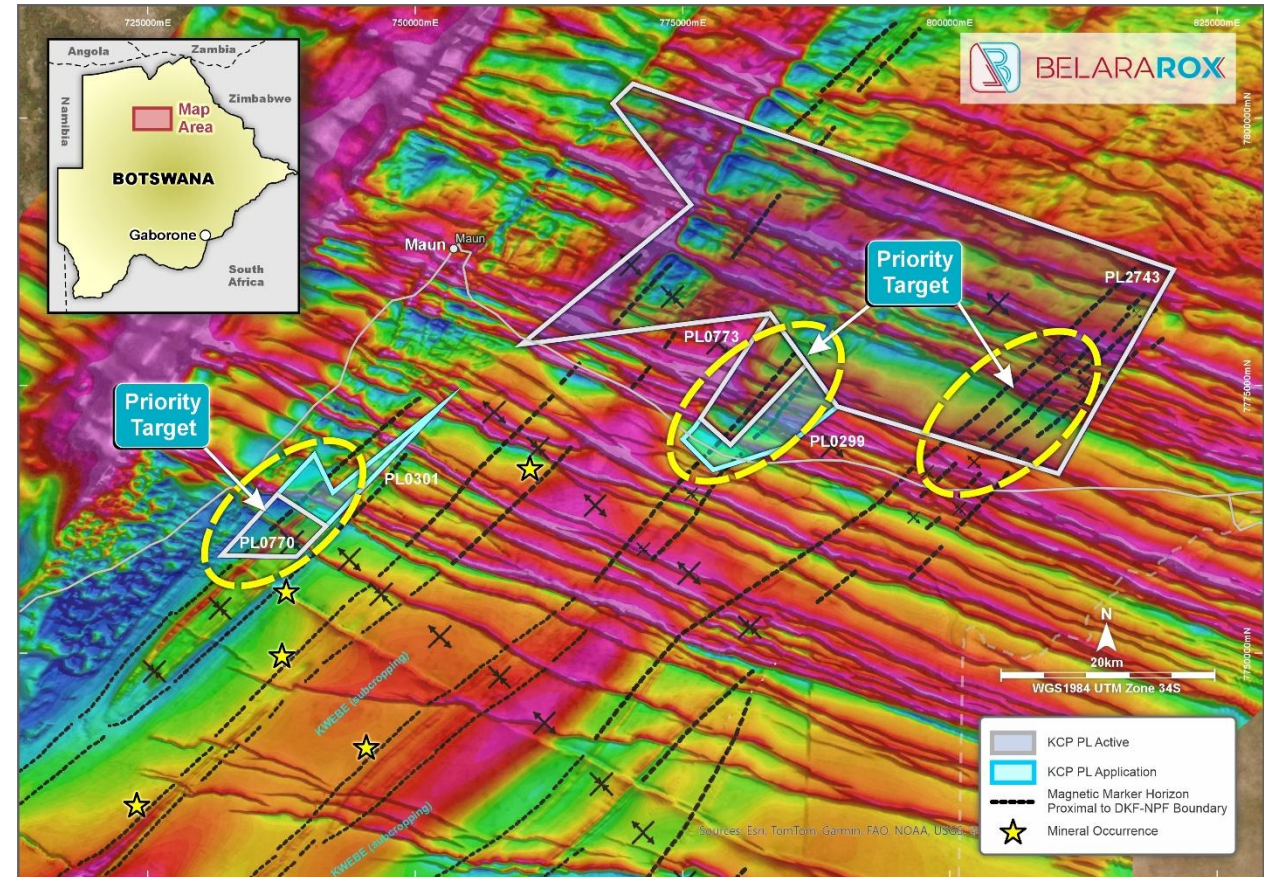
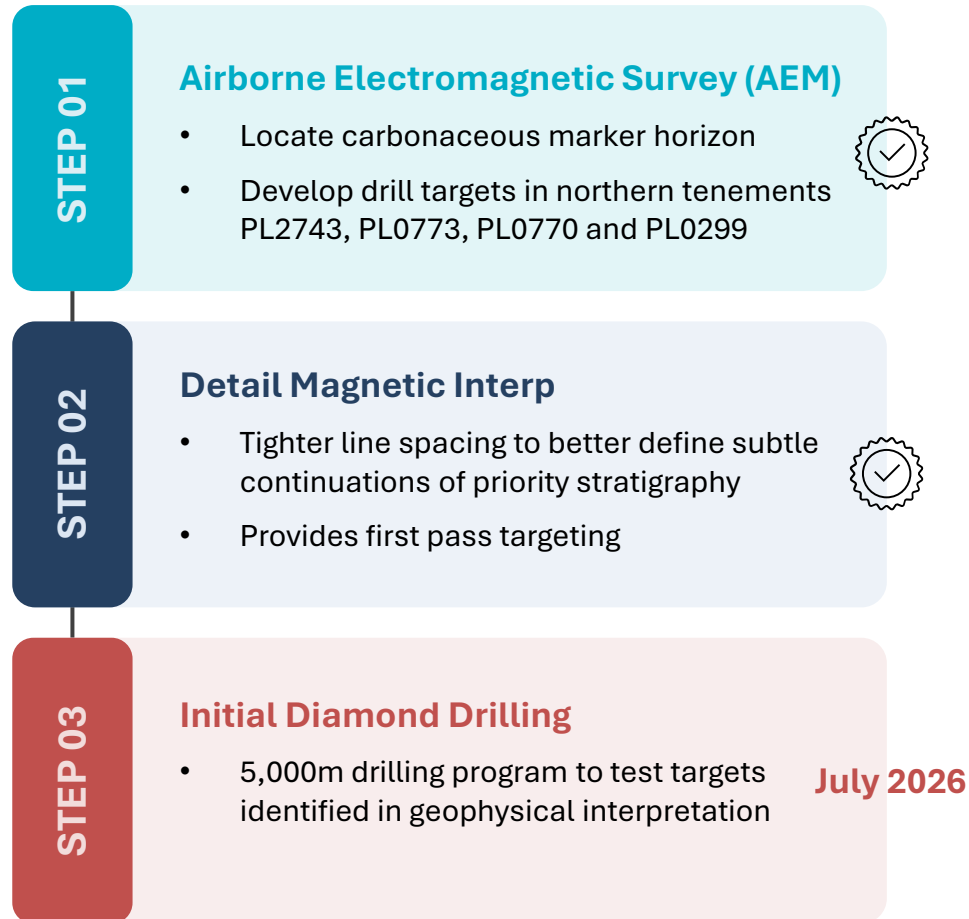


- AUD 9.0 B Market Cap
- Consolidated Mineral Resources
 - 64Mt @ 1% Cu and 13.8 g/t Ag



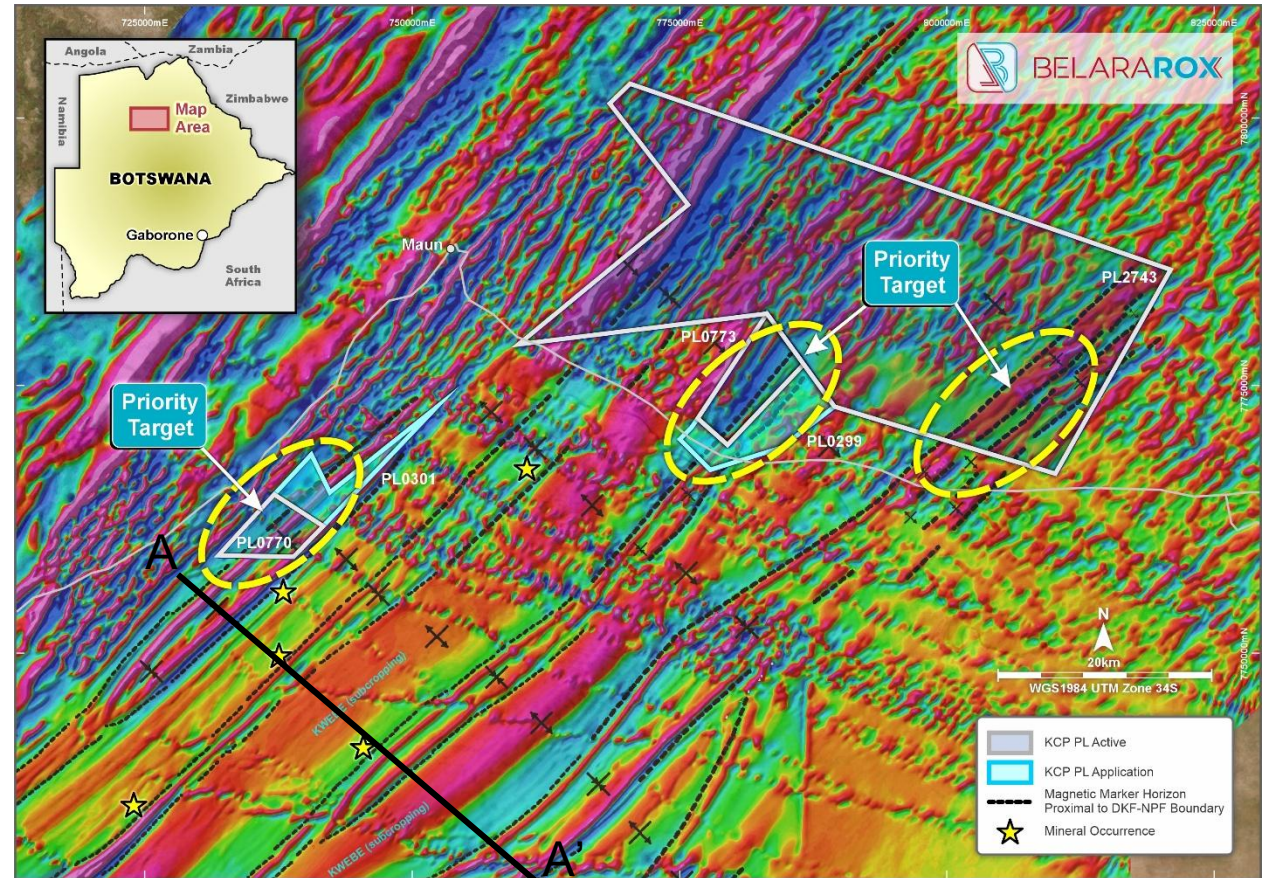
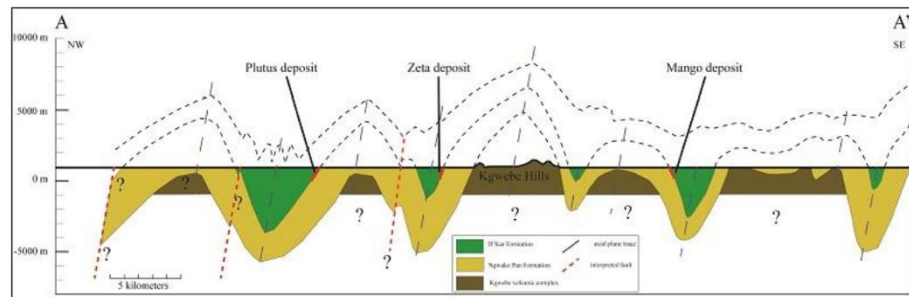
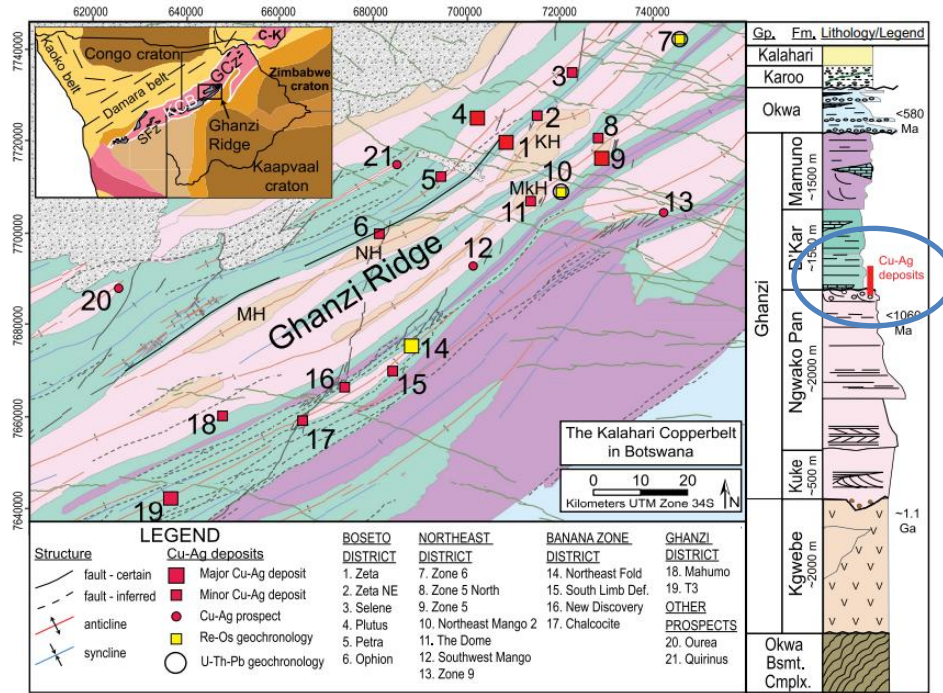
MMG: Market Cap: Based on market capitalisation of HK\$64.10B Retrieved 11 Feb 2026 from [Hong Kong Exchanges and Clearing Limited](#). Conversion to AUD12.5B based on exchange rate of 1 HKD ≈ 0.195 AUD
 MMG: Mineral Resources: MMG Limited. (2024, December 3). [Mineral Resources and Ore Reserves Statement as at 30 June 2024 \[PDF\]](#). Hong Kong Exchanges and Clearing Limited. Retrieved August 29, 2025.
 Sandfire: Market Cap: Australian Securities Exchange. (2025). [Sandfire Resources Limited \(ASX: SFR\) – Company Information](#). Retrieved 11 February 2026, from [SFR share price and company information for ASX:SFR](#)
 Sandfire: Sandfire Resources Limited. (2024, August 29). [Motheo Consolidated Mineral Resource and Ore Reserve Statement as at 30 June 2024 \[PDF\]](#). Retrieved August 29, 2025, from [Motheo-Consolidated-Mineral-Resource-and-Ore-Reserve.pdf](#)

Proven Three-Step Exploration Methodology



Regional airborne Total Magnetic Intensity (“TMI”) with licences and provisional interpretation. Note the numerous and intense WNW-ESE striking dike swarms which interfere with the interpretation of the SW-NE striking magnetic marker horizon within the D’Kar formation (black dashed lines).

2026 – Focusing on the High Priority Tenements



Enhanced image of the regional airborne Magnetics with licences and provisional interpretation. Note the enhanced image is greatly improved and facilitates the interpretation of the SW-NE striking magnetic marker horizon within the D'Kar formation (black dashed lines) which serves as a vectoring proxy to the D'Kar / Ngwako pan prospective boundary.

Local geology and stratigraphy (Hall et al., 2021). Note the location of major deposits and contact between the Ngwako Pan Fm and Dkar Fm.

TMT Project – On the Doorstep of Supergiants

BRX is prioritising capital efficient, exploration at TMT to deliver further near-term discovery success, while vectoring towards district-scale copper-porphyry systems at Toro South and Tambo South



- Strategically located near world class copper and gold discoveries, including:
- Filo del Sol (Vicuna district 11.5 billion tonnes @ 0.33% Cu and 0.22 g/t Au¹) BHP and Lundin paid ~2 billion USD each to purchase Filo Mining in a 50/50 JV
- Atex Resources (Valeriano deposit 2.0 billion tonnes at 0.78% CuEq²)



- Priority Targets
- Toro Central and Tambo South
- Advanced 3D geochemical and geophysical data integration at Tambo South to redefine drill targeting
- New Tenement El Faro south of Toro South

Sources: ¹<https://www.bhp.com/financial-results> (BHP FY2025 Results Presentation)
²<https://www.atexresources.com/valeriano-project/resources/>



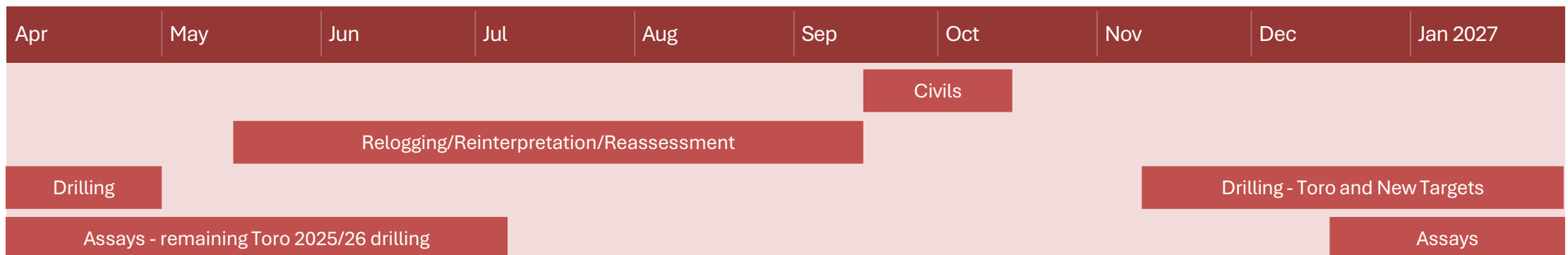
Near-Term Catalysts Across Both Projects Through 2026



KC Project - Botswana



TMT Project – Argentina



**Low Market Cap, Robust Cash,
Experienced Team with a
proven track record**

Capital Structure

*With a market capitalisation value of circa **\$15.0 million** and significant short- and medium-term news flow from Botswana, BRX is highly leveraged to future exploration success*

Share Price*	A\$0.035
Shares on Issue^	421,344,411
Market Capitalisation^	\$14.8million
Cash as of 31 March 2026	\$1.8M**
Top 20 Shareholding	47%

* 29 June 2026 ^Post July 10 EGM **additional A\$3M in post July 10 EGM

Board of Directors

Mr. Neil Warburton
Non-Executive Chairman

Mr. Warburton has over 45 years of experience in senior corporate roles and operating large mining and contracting companies. He is a Fellow of the Australian Institute of Company Directors and a Member of the Australian Institute of Mining and Metallurgy. Currently, he is Non-Executive Chairman of Nimy Resources and a Director of Antipa Minerals and serves as a director on several private companies.

Mr. Chris Gale
Non-Executive Director

Mr. Gale has over 30 years of experience in senior executive roles, focusing on commercial and financial management. He founded Latin Resources Limited in 2008 and developed the Salinas Lithium Deposit in Brazil. Currently, he is the Non-Executive Chairman of Solis Minerals and Core Energy Minerals and served as Chairman of the Council on Australian Latin American Relations from 2012 to 2018.

Mr. John Traicos
Non-Executive Director

Mr. Traicos is a lawyer with over 30 years of experience in commercial and corporate affairs in Australia and Southern Africa. He has served as company secretary and commercial manager for various Australian resource companies and has worked on projects in Australia, Africa, and Indonesia.

Management

Mr. Will Dix
Chief Executive Officer

Mr. Dix is a geologist with 30 years of experience in base metal, gold, and uranium exploration and mining. He has previously worked in Central and South America, Africa, and across Australia. He has extensive expertise in project and team management, as well as significant experience in capital raisings, mergers, acquisitions, and divestments.

Mr. Chris Blaser
General Manager Exploration

Mr. Blaser is a geologist with over 16 years of experience in global mineral exploration and project management, working across South America, Australia and multiple other international jurisdictions, including 10+ yrs with BHP (2 years in the Chilean Andes, Cu porphyries).

Three Take Home Messages – what to remember



Location

We are only exploring in Tier 1 Jurisdictions and are surrounded by Majors BHP, Barrick, MMG etc



News Flow

12 month news flow cycle based on exploration timelines



Copper

Demand Drivers (AI data centres etc),
Constrained supply – 30% shortfall by 2035¹



1. BloombergNEF, Aug 2025. Wood Mackenzie, Oct 2025. Wood Mackenzie, Oct 2025 / IEA / UNCTAD, 2025. USGS Nov 2025 / White House Jul 2025.

A New Era, a New Vantage Point

to be approved July 10 EGM



VANTAGE
METALS

Contact

Will Dix

Chief Executive Officer

will.dix@belararox.com.au

Tel: [1300 664 177](tel:1300664177)

Fiona Marshall

White Noise Communications

Fiona@whitenoisecomms.com

This presentation has been authorised for release by the Board of Directors.

Copper: Structural Supply Deficit Meets Surging Multi-Sector Demand

Demand Drivers

- **AI data centres** forecast to consume an average of 400,000 tonnes of copper per year over the next decade, contributing to a projected 6 million-tonne global supply shortfall by 2035¹
- **Renewable energy** copper demand forecast to more than double, from 1.7 Mtpa today to 4.3 Mtpa by 2035²
- **Grid infrastructure** copper demand to reach 1.1 Mtpa by 2030, driven by renewables and AI buildout
- **EV market** penetration forecast to double from 22% to 44% by 2035, driving EV copper demand from 1.7 Mtpa to 4.3 Mtpa

Constrained Supply³

- Ore grades have declined ~40% since 1991
- New mines now take up to 25 years from discovery to production; **existing + planned mines fall 30% short of projected 2035 demand**
- **Requires 8+ Mtpa of new mine capacity** at a cost exceeding US\$210 billion - investment that is not materialising at the required pace

Geopolitics - The New Critical Mineral⁴

- **Copper formally added to the US Critical Minerals List** (USGS, Nov 2025), recognising supply chain disruption risk to national security
- **US imposed 50% tariff on copper imports (Jul 2025)**, signalling strategic urgency around domestic and allied-nation supply
- **China controls 45%+ of global refined copper output**, accelerating Western government drive for supply chain independence

1. BloombergNEF, Aug 2025. 2. Wood Mackenzie, Oct 2025. 3. Wood Mackenzie, Oct 2025 / IEA / UNCTAD, 2025. 4. USGS Nov 2025 / White House Jul 2025.

Global Copper Market: 2035 Projection

Million tonnes per annum (Mtpa)

Source: BloombergNEF (Aug. 2025); Wood Mackenzie (Oct 2025); IEA



Demand drivers:

- 6 Mt unmet shortfall
- AI data centres
- EVs & battery storage
- Renewables & grid

Existing mines meet only ~70% of 2035 demand

New capacity needed 8+ Mtpa at US\$210B+